

Change Text

2628 GstarCAD MY /KW November 11, 2021 [Workflow](#) 0 641

When there are several texts in the drawing which need to be modified, it would be much more tedious and inefficient to modify them one by one. Change text allows users make bulk modifications to several texts. For example, this function can modify the alignment, height, width, position, rotation, style and content of several texts simultaneously. It greatly improves the efficiency of single text and Mtext modifications. You can access it from:

Menu: Text>Change Text

Command Entry: Changetext

For example, in a table or part list created, we can apply change text. After the command is started, a message will be displayed in the command line >

Please select object:

Then select the text to be modified, immediately a prompt message will be displayed>

Height (H) / Justify (J) / Location (L) / Rotation (R) / Style (S) / Text (T) / Undo (U) / Width (W):

Height :Changes the text height. Within this option there are three more: Single (I) / List (L) / New height for all objects:

Single : This changes the text height one by one.

List : This shows the text information such as: Min. and Max. text height and average.

New Height for all objects: This changes the height of the selected text at once.

PART LIST		PART LIST	
SMALL BUSHINGS	3	SMALL BUSHINGS	3
SHAFT	1	SHAFT	1
SUB - BASE PLATE	1	SUB - BASE PLATE	1
MULTI-HOLE BASE PLATE	1	MULTI-HOLE BASE PLATE	1
THREADED SHAFT	1	THREADED SHAFT	1
BUSHING "B"	2	BUSHING "B"	2
SUPPORT PLATE	1	SUPPORT PLATE	1
BUSHING "A"	1	BUSHING "A"	1
BMW - THREADED PIN "B"	1	BMW - THREADED PIN "B"	1
BMW - THREADED PIN "A"	1	BMW - THREADED PIN "A"	1
TILT		E	1
DESC			QTY

Command Bar
Please select object:
Opposite corner:Find out 11, total 11
Please select object:
Height (H)/Justify(J)/Lacation(L)/Rotation(R)/Style(S)/Text(T)/Undo(U)/Width(W): H
Single(I)/List(L)/<New Height for all objects>:2.5
Command:

Justify : Changes the text justification. Within this option there are several more:

Align (A) / Fit (F) / Center (C) / Left (L) / Middle (M) / Right (R) / TL / TC / ML / MC / MR / BL / BC / BR:

Align: This aligns text according to a specific point.

Fit: Adjust the length of a single text by specifying two points.

Center: Justify the context at the center of the frame area text.

Left: Justify the context at the left of the frame area text.

Middle: Justify the context at the middle of the frame area text.

Right: Justify the context at the right of the frame area text.

TL: Justify the context at the top left of the frame area text.

TC: Justify the context at the top center of the frame area text.

ML: Justify the context at the middle left of the frame area text.

MC: Justify the context at the middle center of the frame area text.

MR: Justify the context at the middle right of the frame area text.

BL: Justify the context at the bottom left of the frame area text.

BC: Justify the context at the bottom center of the frame area text.

BR: Justify the context at the bottom right of the frame area text.

PART LIST				
SMALL BUSHINGS	3	STEEL		Welded ITEM 1-9
SHAFT	1	Q235A		
SUB - BASE PLATE	1	STEEL		16mm. thickness
MULTI-HOLE BASE PLATE	1	STEEL		16mm. thickness
THREADED SHAFT	1	Q235A		Welded ITEM 8
BUSHING "B"	2	Q235A		Welded ITEM 5
SUPPORT PLATE	1	STEEL		10.5mm. thickness
BUSHING "A"	1	Q235A		Welded ITEM 5
BMW - THREADED PIN "B"	1	Q235A		M12 x 1.4 x 104
BMW - THREADED PIN "A"	1	Q235A		M10 x 2.5 x 100
TILT PLATE	1	STEEL		15mm. thickness
DESCRIPTION	QTY	MATERIAL	TREATMENT	REMARKS

PARTS LIST		
APPROVALS	DATE	<div><div><div>Y</div><div>X</div></div><div><div>GSTAR</div><div>CAD</div><div>2013</div></div><div><div>TITLE</div><div>BMW CHASSIS CLAMP ASSEMBLY</div></div></div>

B

A

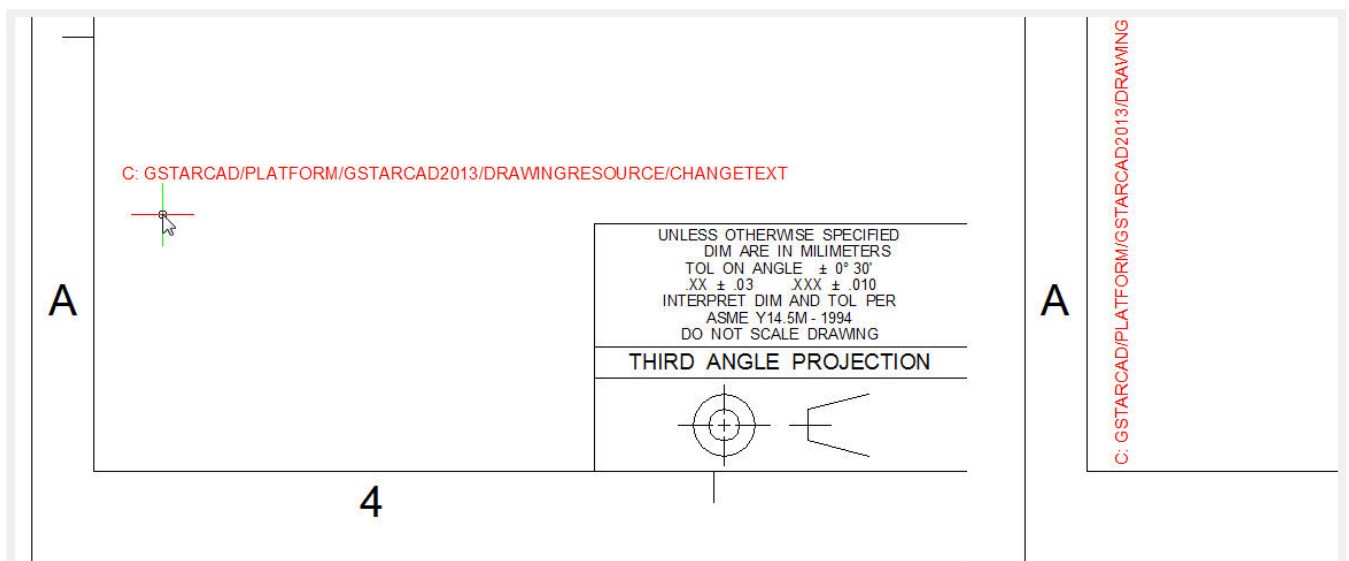
PART LIST		
SMALL BUSHINGS	3	STEEL
SHAFT	1	Q235A
SUB - BASE PLATE	1	STEEL
MULTI-HOLE BASE PLATE	1	STEEL
THREADED SHAFT	1	Q235A
BUSHING "B"	2	Q235A
SUPPORT PLATE	1	STEEL
BUSHING "A"	1	Q235A
BMW - THREADED PIN "B"	1	Q235A
BMW - THREADED PIN "A"	1	Q235A
TILT PLATE	1	STEEL
DESCRIPTION	QTY	MATERIAL

PARTS LIST		

Location : Changes the text location by selecting and moving the text frame base point.

		3	STEEL		Welded ITEM 1-9	B	
■	SHAFT	■	1	Q235A			■
	SUB - BASE PLATE		1	STEEL	16mm. thickness		■
	MULTI-HOLE BASE PLATE		1	STEEL	16mm. thickness		■
	THREADED SHAFT		1	Q235A	Welded ITEM 8		■
	BUSHING "B"		2	Q235A	Welded ITEM 5		■
	SUPPORT PLATE		1	STEEL	10,5mm. thickness		■
	BUSHING "A"		1	Q235A	Welded ITEM 5		■
	BMW - THREADED PIN "B"		1	Q235A	M12 x 1,4 x 104		■
	BMW - THREADED PIN "A"		1	Q235A	M10 x 2,5 x 100		■
■	TILT PLATE	■	1	STEEL	15mm. thickness		■
	DESCRIPTION	QTY	MATERIAL	TREATMENT	REMARKS		
PARTS LIST							
APPROVALS	DATE	GSTARCAD 2013					Place in other point

Rotation : Changes the text rotation according to the input value.



Style : Changes the text style by typing the style name in the command line.

Text Formatting

ARIAL_TTF Arial 2.5000 B I

DESCRIPTION	QTY	MATERIAL
SMALL BUSHINGS	3	STEEL
SHAFT	1	Q235A
SUB - BASE PLATE	1	STEEL
MULTI-HOLE BASE PLATE	1	STEEL
THREADED SHAFT	1	Q235A
BUSHING "B"	2	Q235A
SUPPORT PLATE	1	STEEL
BUSHING "A"	1	Q235A
BMW - THREADED PIN "B"	1	Q235A
BMW - THREADED PIN "A"	1	Q235A
TILT PLATE	1	STEEL

PARTS LIST

Text Formatting

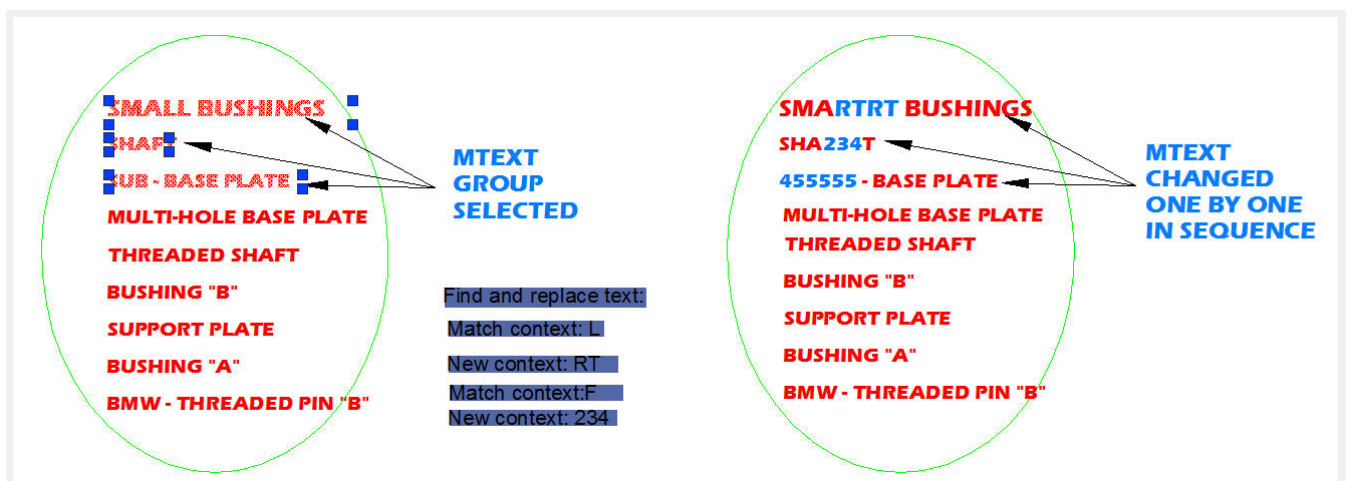
ERAS STD Eras Light ITC 3.0000 B I

DESCRIPTION	QTY	MATERIAL
SMALL BUSHINGS	3	STEEL
SHAFT	1	Q235A
SUB - BASE PLATE	1	STEEL
MULTI-HOLE BASE PLATE	1	STEEL
THREADED SHAFT	1	Q235A
BUSHING "B"	2	Q235A
SUPPORT PLATE	1	STEEL
BUSHING "A"	1	Q235A
BMW - THREADED PIN "B"	1	Q235A
BMW - THREADED PIN "A"	1	Q235A
TILT PLATE	1	STEEL

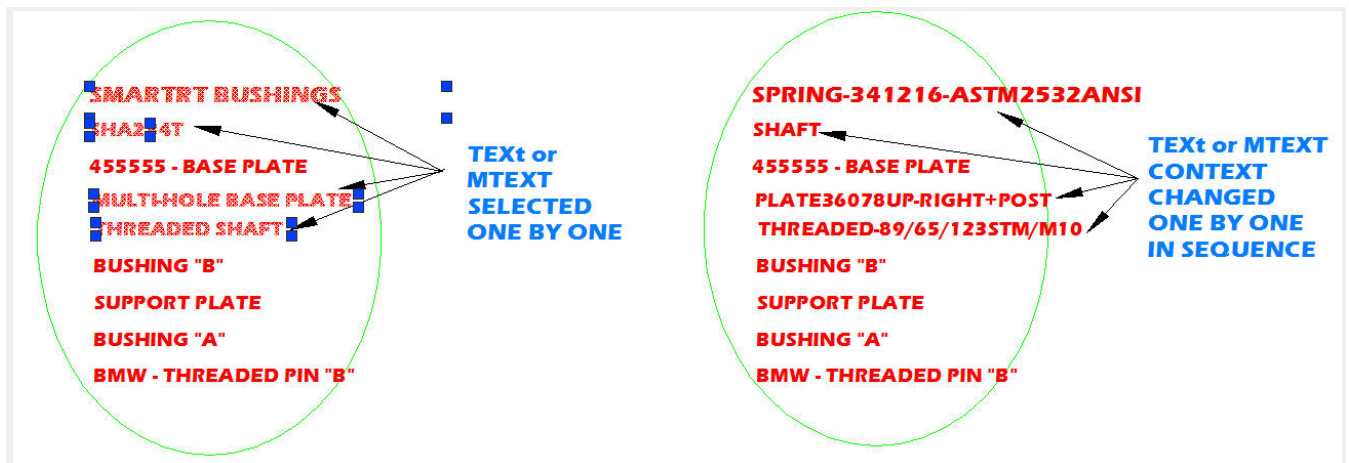
PARTS LIST

Text : Find and replace text. Within this option there are three more: Single (I) / Re-enter (R) / Global (G):

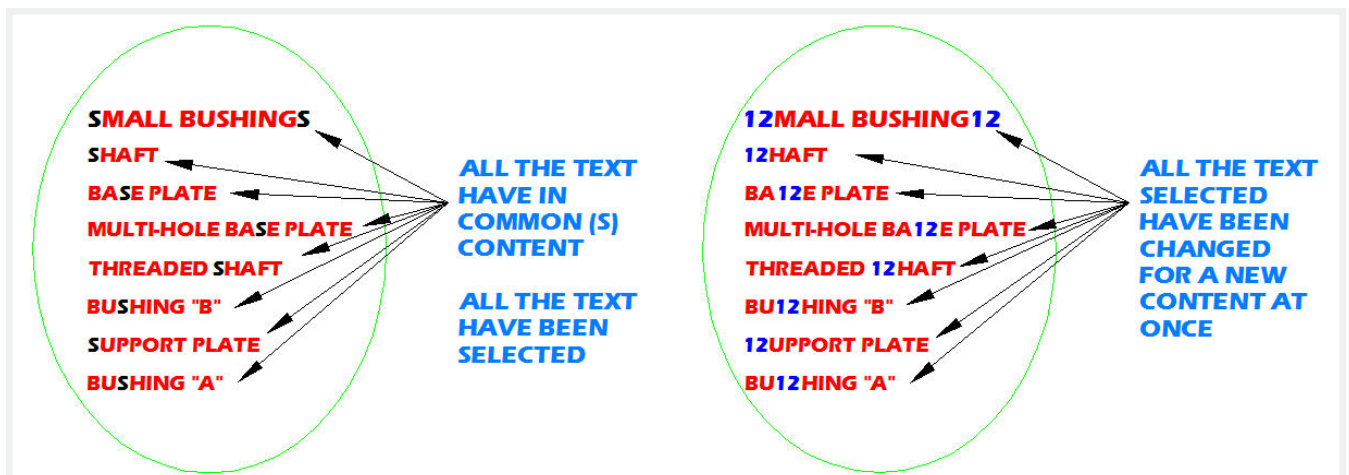
Single : If you select one or more texts, this will match and change any context within the text selected in sequence (one by one).



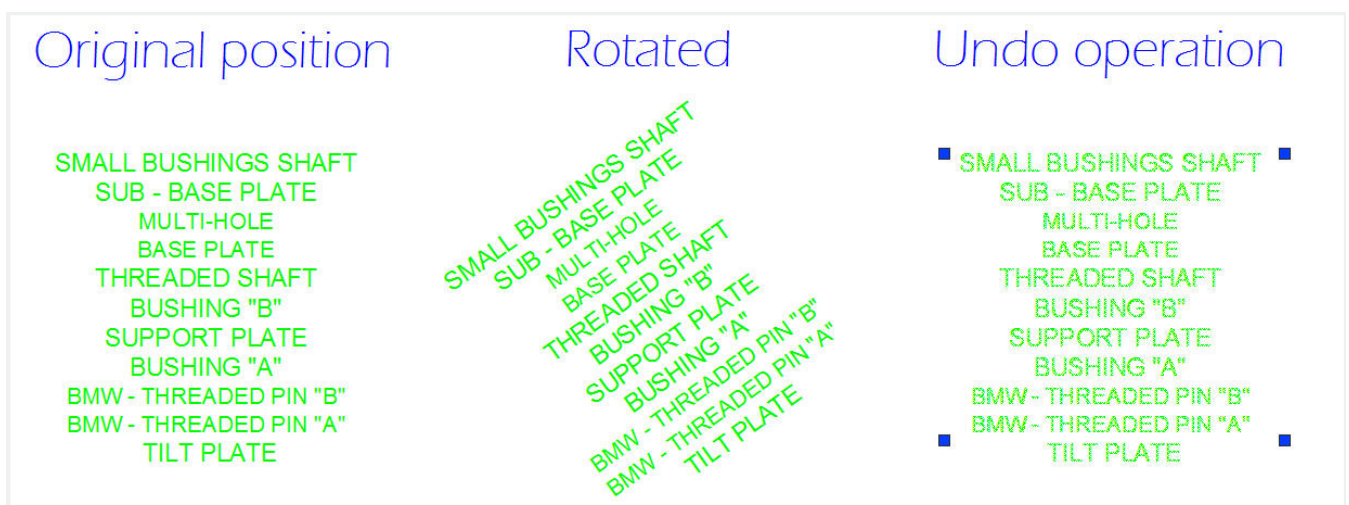
Re-enter : This retypes a new content by typing it in the command line and then replaces it.



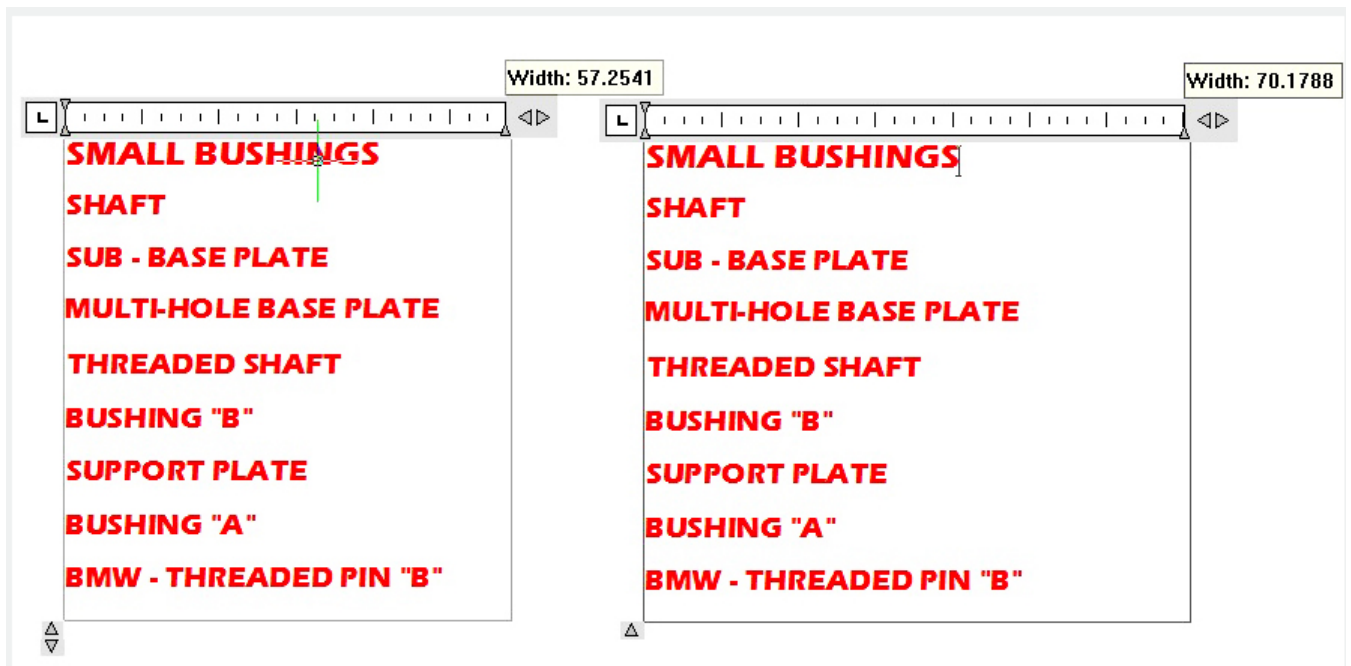
Global : If you select one or more text, this will match and change any context within a text group selected at once.



Undo : like CTRL+Z, this will undo an operation after selecting any other.



Width : Changes the frame area text by entering a new width factor value.



Online URL: <https://kb.gstarcad.com.my/article/change-text-2628.html>