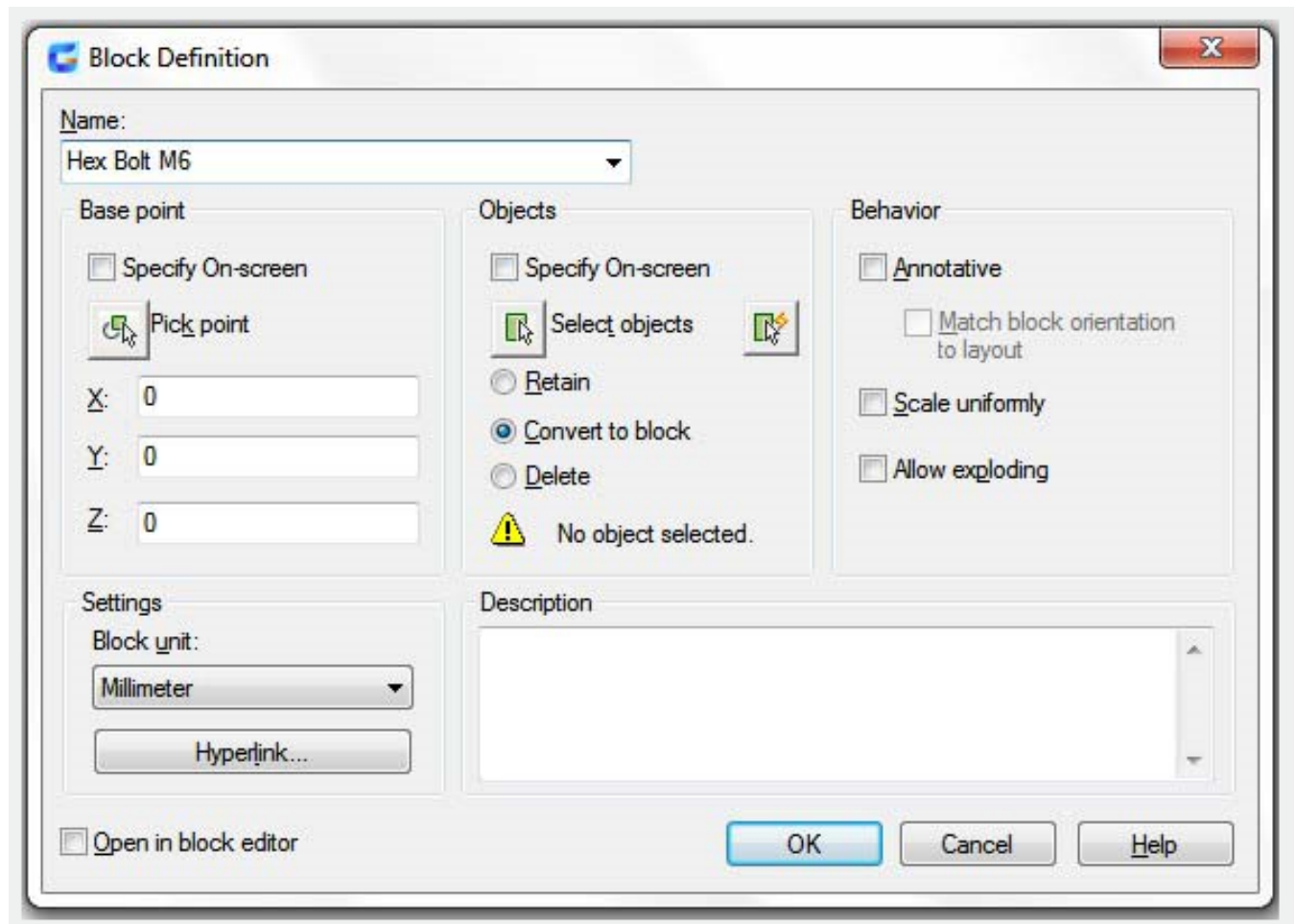


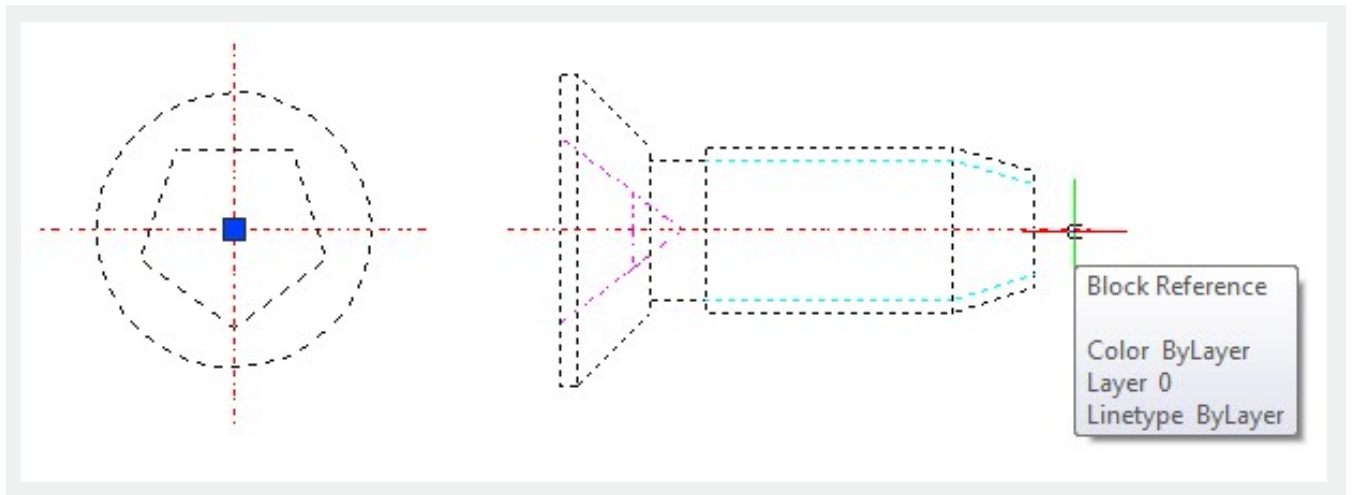
# Create Blocks

2510 GstarCAD MY /KW November 9, 2021 [Workflow](#) 0 942

You can create blocks by selecting objects, specifying a name and base point. You can also create [TEXT](#) information as attributes of blocks. You can define a blocks by [BLOCK](#) , insert a DWG/DXF file, [COPYCLIP](#) and paste as [BLOCK](#) , or binding an [XREF](#) . After you define a block , then you can repeatedly insert block reference anywhere in current drawing, and you can insert it in other drawings by Design Center ([ADCENTER](#)).



The base point is used as a reference for positioning the block when you insert it.



Online URL: <https://kb.gstarcad.com.my/article/create-blocks-2510.html>