

SUPERHATCH command

2377 GstarCAD MY /KW August 23, 2021 [CAD Commands](#) 0 1141

The **SUPERHATCH** command is used to create almost any type of fill like image, block, xref and wipeout, all you need to do is make a block of the pattern that you want to tile as your hatch.

Command Access :

Command : SUPERHATCH

Menu : Express>Draw>Superhatch

The Superhatch dialog box is displayed:

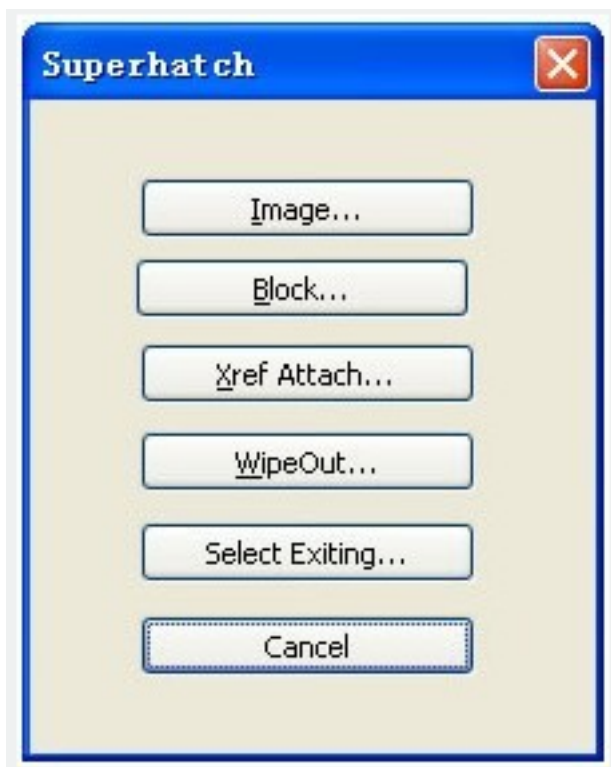


Image : Accesses the Select Image dialog box to specify the image for the hatch pattern.

Block : Opens the Superhatch_Insert dialog box to specify the block for the hatch pattern.

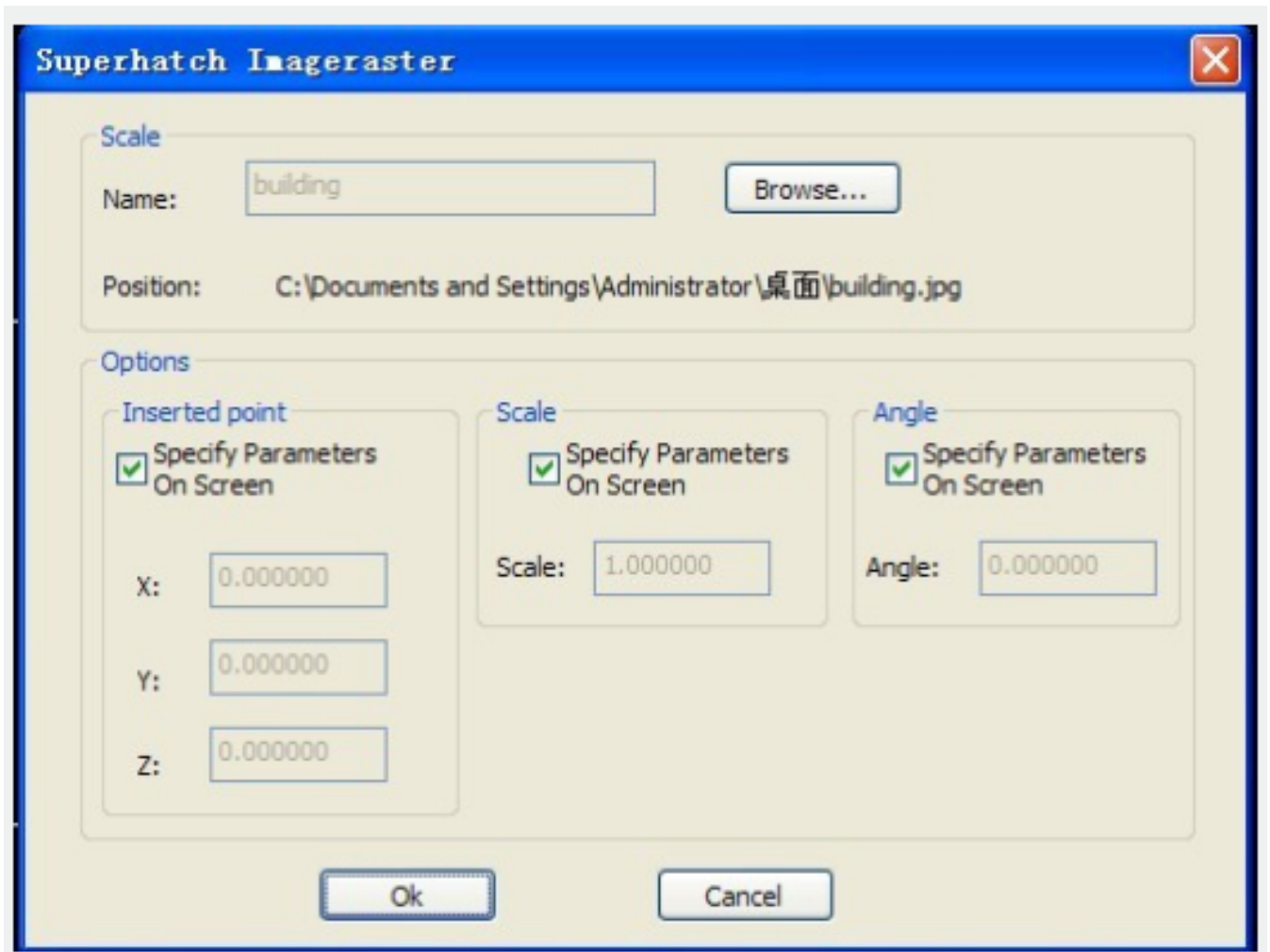
Xref Attach : Accesses the Select reference file dialog box for specifying an xref file for a hatch pattern.

WipeOut : Selects a wipeout object as a hatch pattern.

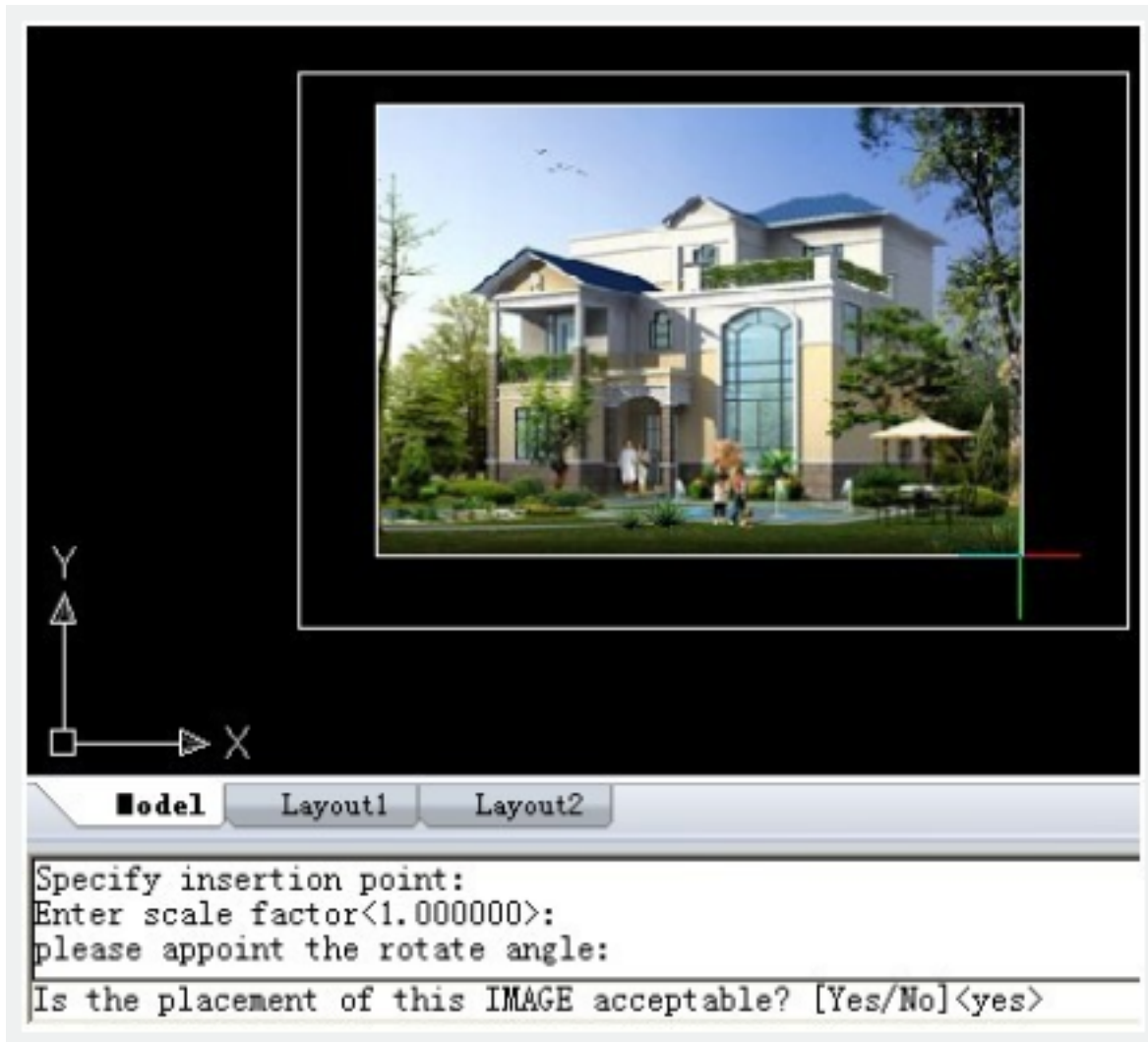
Select Existing : Selects an existing image, block, xref, or Wipeout as a hatch pattern.

For Images:

1. Open Superhatch dialog box.
2. Click Image... button, choose an image file, the Superhatch Imageraster dialog box is displayed:



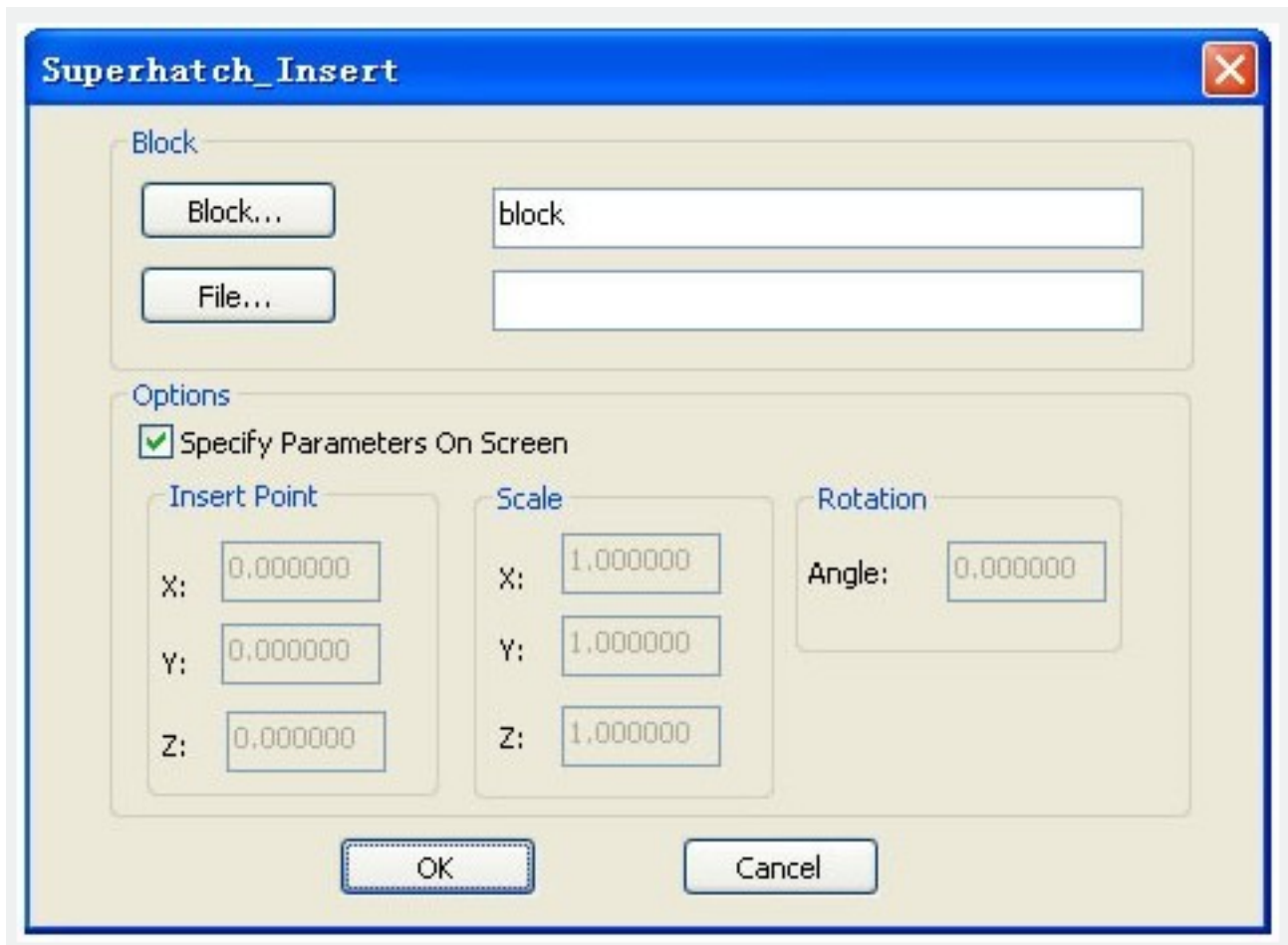
3. Pick the OK button in the Superhatch Imageraster dialog box, specify insertion point, scale factor and angle of rotation.
4. The prompt "Is the placement of this IMAGE acceptable? [Yes/No]<yes>":



5. Pick a point in the rectangle, press ENTER to finish.

For Blocks:

1. Open Superhatch dialog box.
2. Click the Block... button to access the Superhatch_Insert dialog box:



The image shows a software dialog box titled "Superhatch_Insert". It has a blue title bar with a close button (X) in the top right corner. The dialog is divided into two main sections: "Block" and "Options".

Block Section:

- Contains two buttons: "Block..." and "File...".
- Next to the "Block..." button is a text input field containing the word "block".
- Below the "File..." button is an empty text input field.

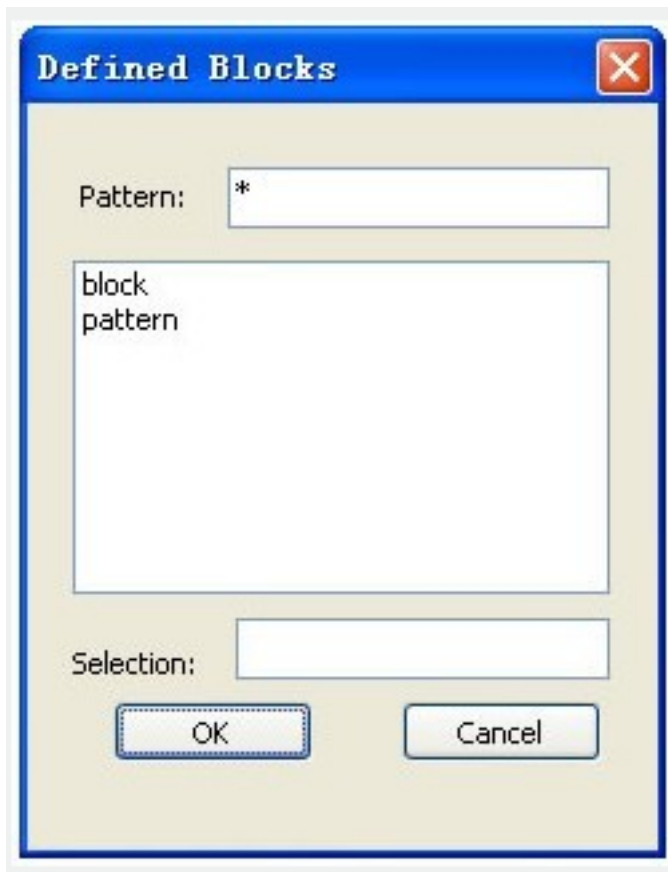
Options Section:

- Starts with a checked checkbox labeled "Specify Parameters On Screen".
- Below this are three sub-sections, each with its own title and input fields:
 - Insert Point:** Contains three input fields labeled "X:", "Y:", and "Z:", each with the value "0.000000".
 - Scale:** Contains three input fields labeled "X:", "Y:", and "Z:", each with the value "1.000000".
 - Rotation:** Contains one input field labeled "Angle:" with the value "0.000000".

At the bottom of the dialog are two buttons: "OK" and "Cancel".

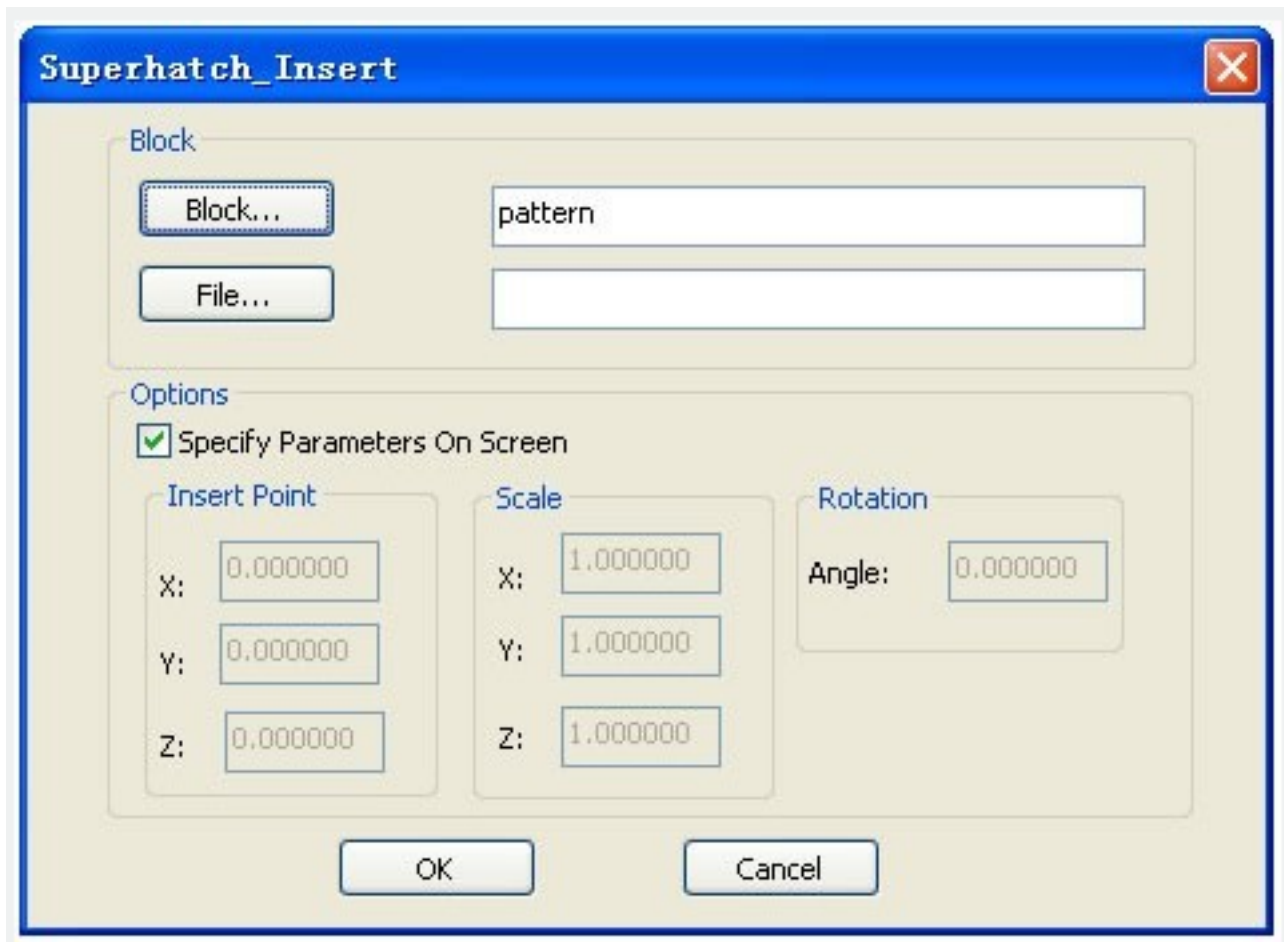
Block: Click the Block... button to select a block in the current file:

File: Pick the File... button to select a drawing file as the block.



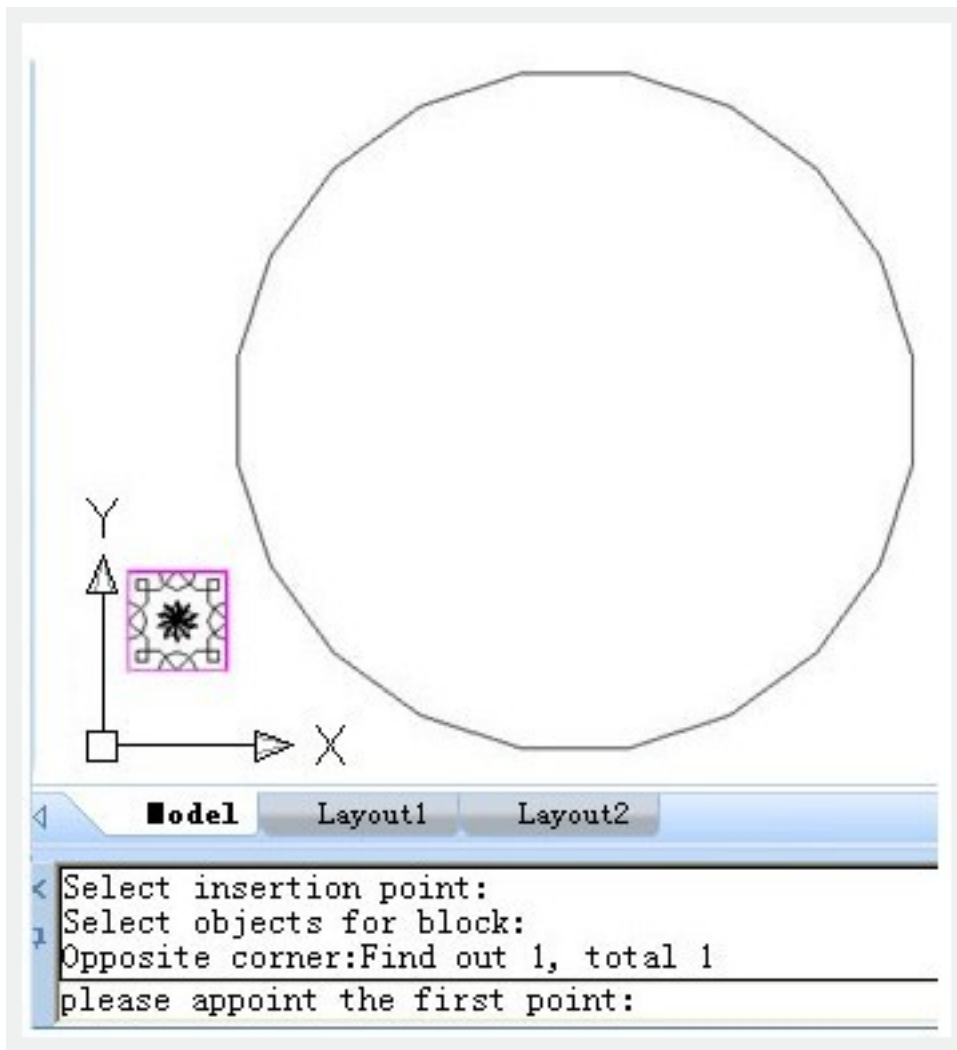
3. Select the block in the Defined Blocks dialog box and press OK.

Note: Adjust insertion parameters on screen or deselect the check box to preset insertion parameters:

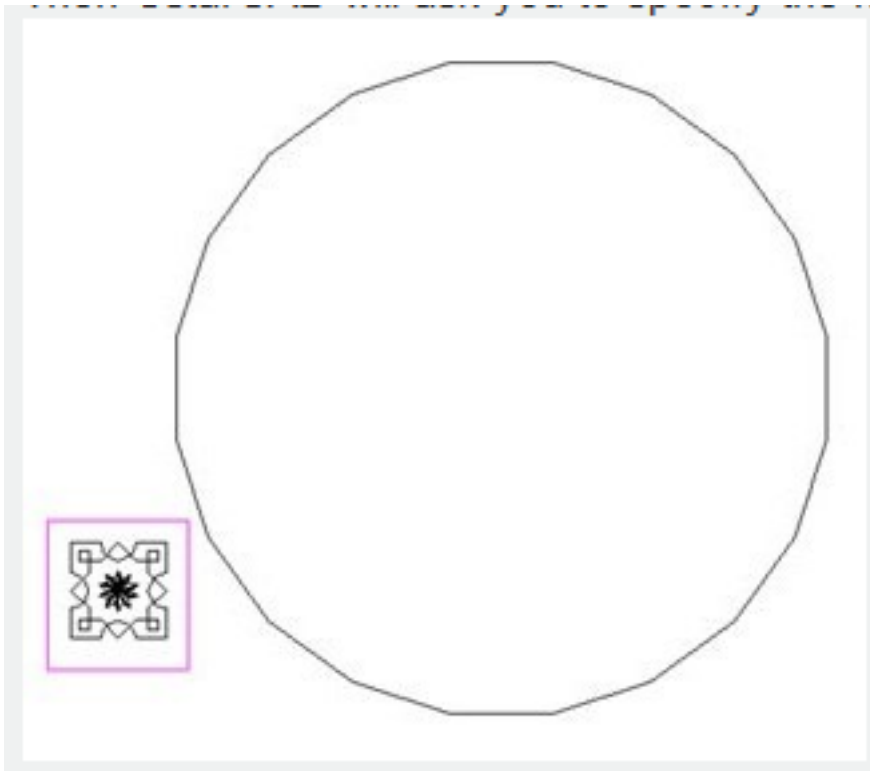


4. Specify insertion point, scale factor and angle of rotation.

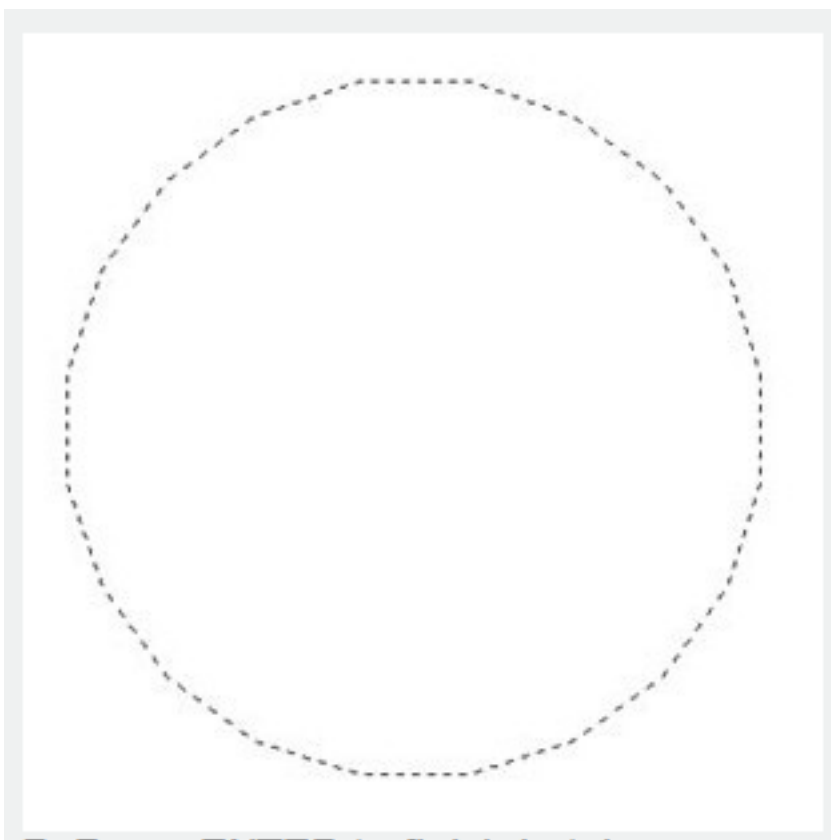
5. The prompt "Is the placement of this IMAGE acceptable? [Yes/No]<yes>" is displayed. Choose No to Esc. If you choose Yes, GstarCAD will ask you to specify the first point:



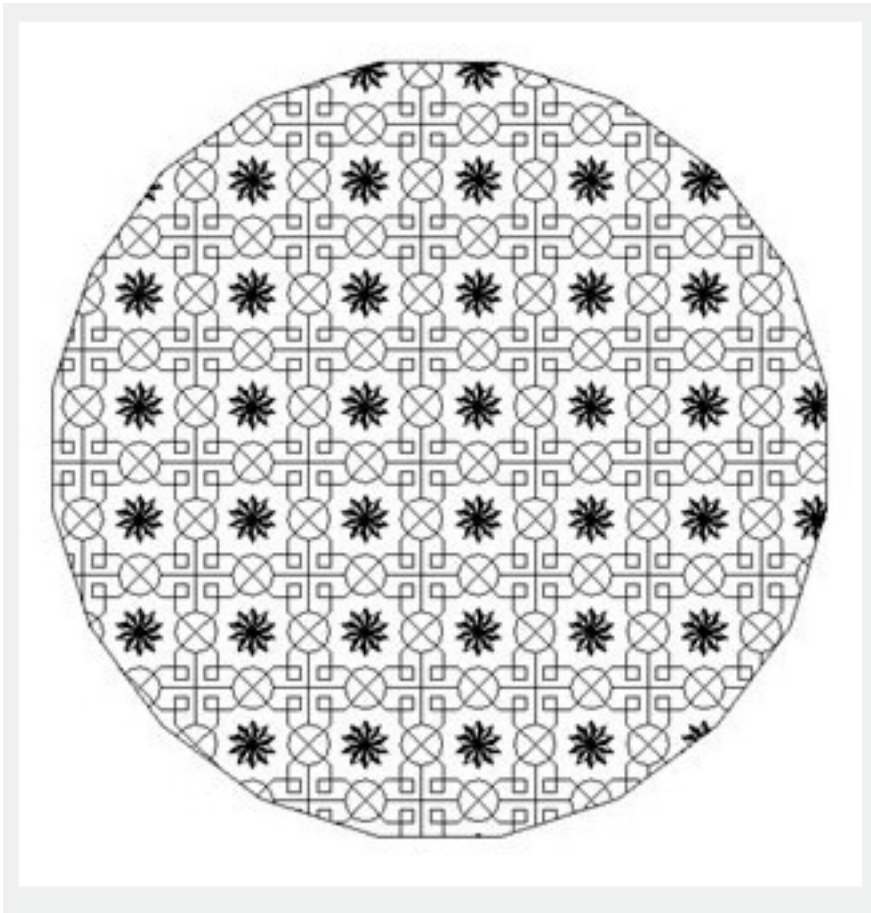
Then GstarCAD will ask you to specify the next point:



6. Specify an internal point for hatch boundary:



7. Press ENTER to finish hatch:



Online URL: <https://kb.gstarcad.com.my/article/superhatch-command-2377.html>