

# HATCH command

2142 GstarCAD MY /KW April 15, 2022 [CAD Commands](#) 0 1121

The **HATCH** command is used to fill closed regions or specified objects by Hatch pattern, solid fill, or gradient fill.

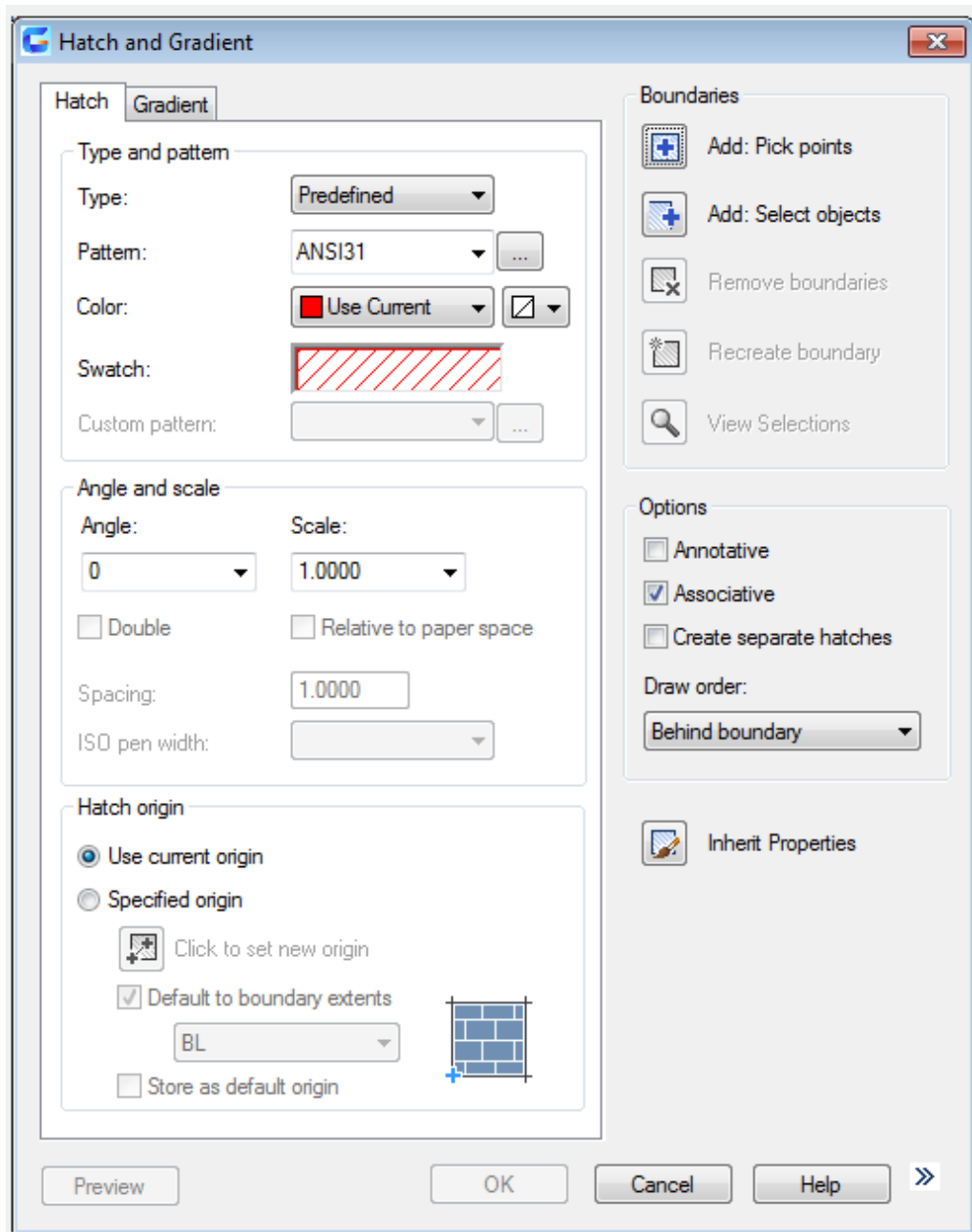
## Command Access:

Ribbon : Home > Draw > Hatch > Hatch

Menu : Draw > Hatch...

Command : HATCH

## Function Description:



Inputting "-hatch" under command prompt, it will display options.

**Note :** to avoid creating a large number of hatch lines, the maximum number of hatch lines is limited in a single hatch operation. This limit could avoid some problems about memory and performance. User could use the HPMAXLINES system variable to change this limited number.

Users could use the following ways to select hatch boundaries:

**Add :** Pick points: select point in closed region.

**Add Select objects :** select object in closed region.

Use "-HATCH" options to specify boundary.

---

Related tutorial video:

- [Hatch command](#) 00:20
- [Gradient command](#) 01:48

Above video sources from [TUTORIAL - GETTING STARTED WITH GSTARCAD](#), enrol now for free.

Online URL: <https://kb.gstarcad.com.my/article/hatch-command-2142.html>