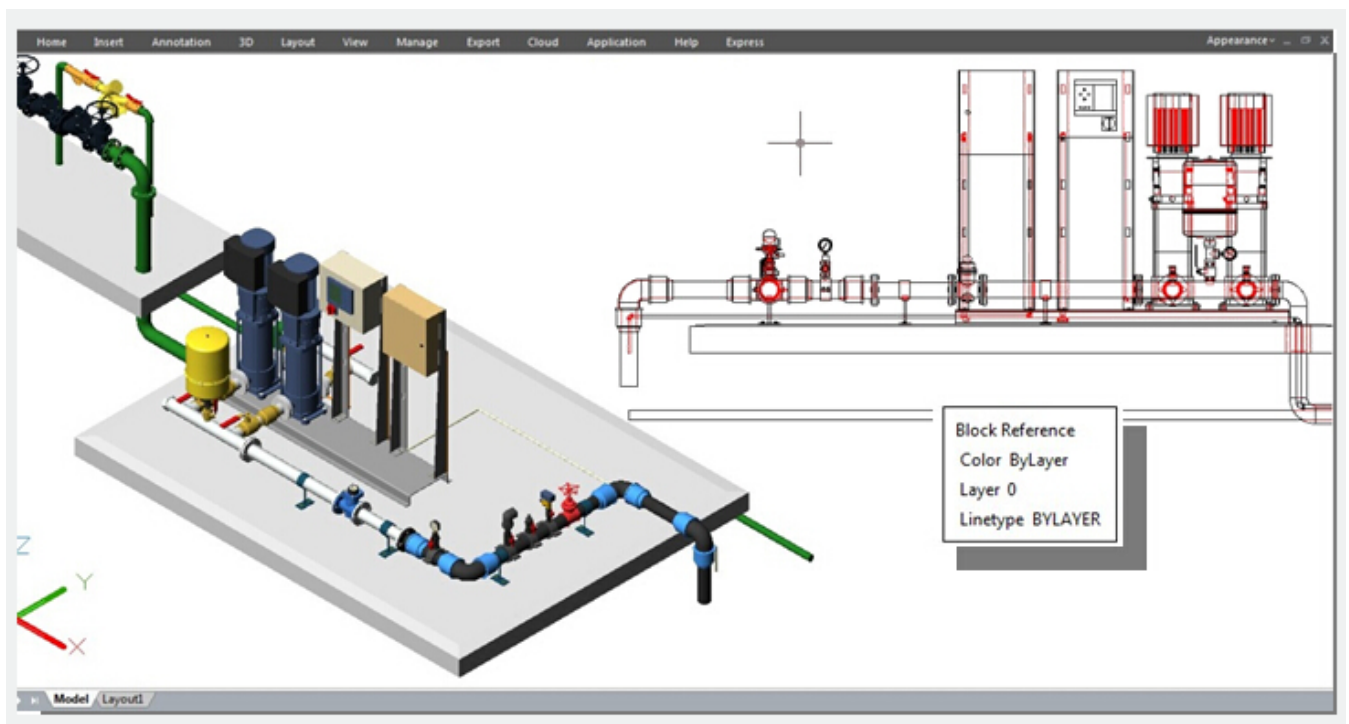


# FLATSHOT command.

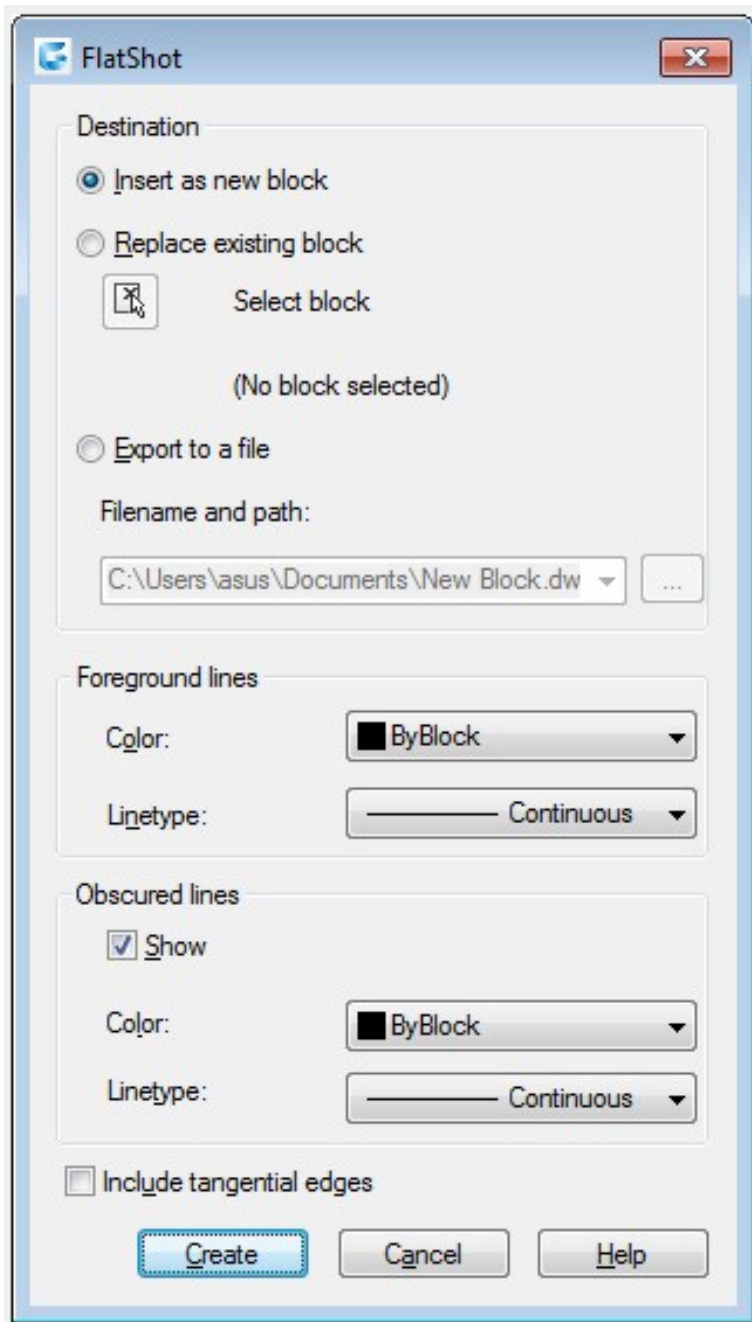
2130 GstarCAD MY /KW August 16, 2021 [CAD Commands](#) 0 818

The FLATSHOT command you can create a 2D representation of all 3D objects based on the current view. The edges of all 3D solids, surfaces, and meshes are projected line-of-sight onto a plane parallel to the viewing plane. The 2D representations of these edges are inserted as a block on the XY plane of the UCS. This block can be exploded for additional changes.

**Command Access : FLATSHOT**



**Flatshot Dialog Box**



**Destination** : Controls where the flattened representation is created. Insert As New Block: Specifies to insert the flattened representation as a block in the current drawing.

**Replace Existing Block** : Replaces an existing block in the drawing with the newly created block.

**Select Block** : Closes the dialog box temporarily while you select the block you are replacing in the drawing. When you finish selecting the block, press Enter to re-display the Flatshot dialog box.

**Block Selected / No Block Selected** : Indicates whether a block has been selected.

**Export to a File** : Saves the block to an external file.

**Foreground Lines** : Contains controls for setting the color and linetype of lines that are not obscured in the flattened view.

**Color** : Sets the color of lines that are not obscured in the flattened view.

**Linetype** : Sets the linetype of lines that are not obscured in the flattened view.

**Obscured Lines** : Controls whether lines that are obscured in the drawing are displayed in the flattened

view, and sets the color and linetype of these obscured lines.

**Show** : Controls whether obscured lines are shown in the flattened representation. When selected, the 2D flattened representation displays lines hidden by other objects.

**Color** : Sets the color of lines that lie behind geometry in the flattened view.

**Linetype** : Sets the linetype of lines that lie behind geometry in the flattened view

**Include Tangential Lines** : Creates silhouette edges for curved surfaces.

**Create** : Creates the flattened view.

Online URL: <https://kb.gstarcad.com.my/article/flatshot-command-2130.html>