

# ATTSYNC command

1981 GstarCAD MY /KW August 3, 2021 [CAD Commands](#) 0 1001

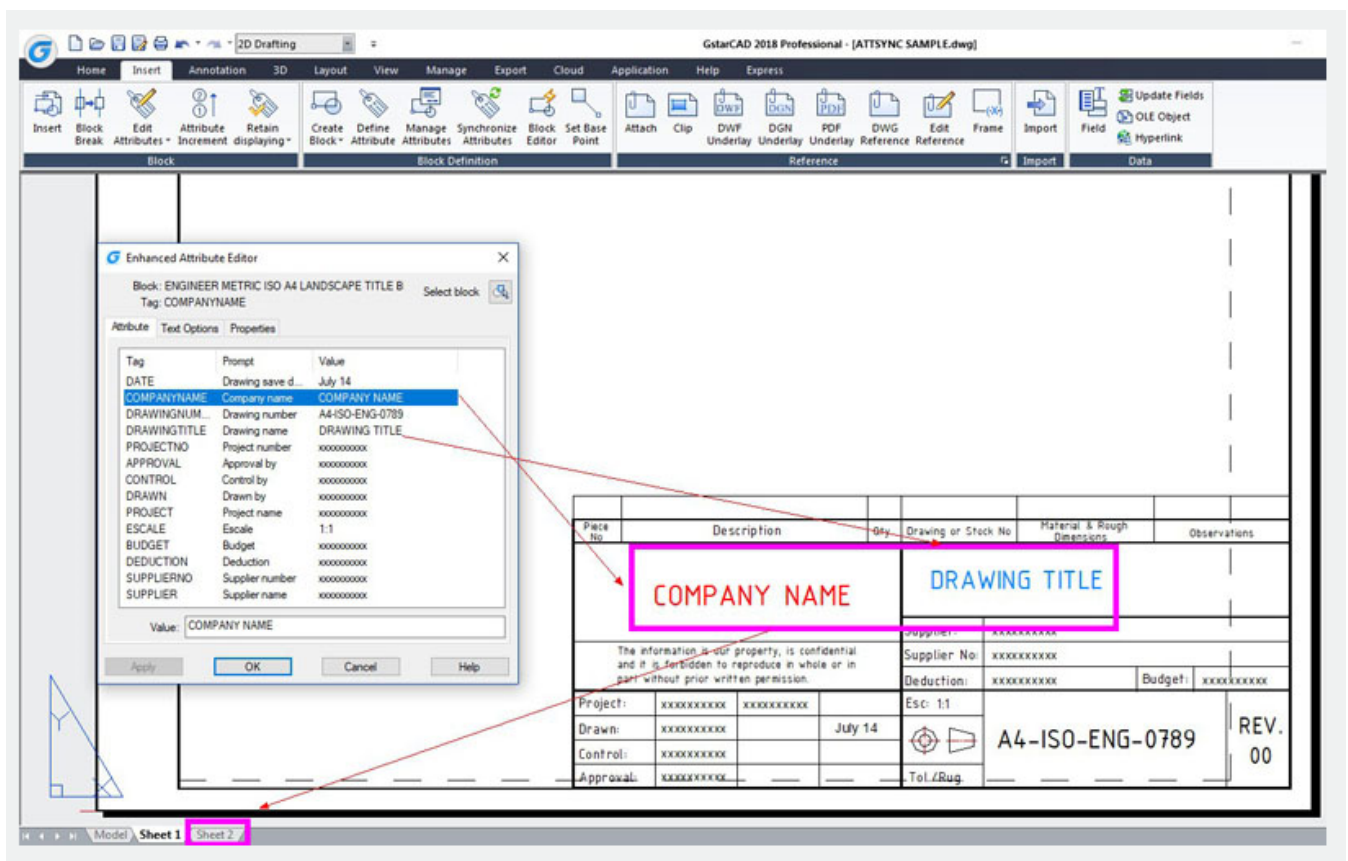
The **ATTSYNC** command applies attribute changes in block definitions to all block references of the same name.

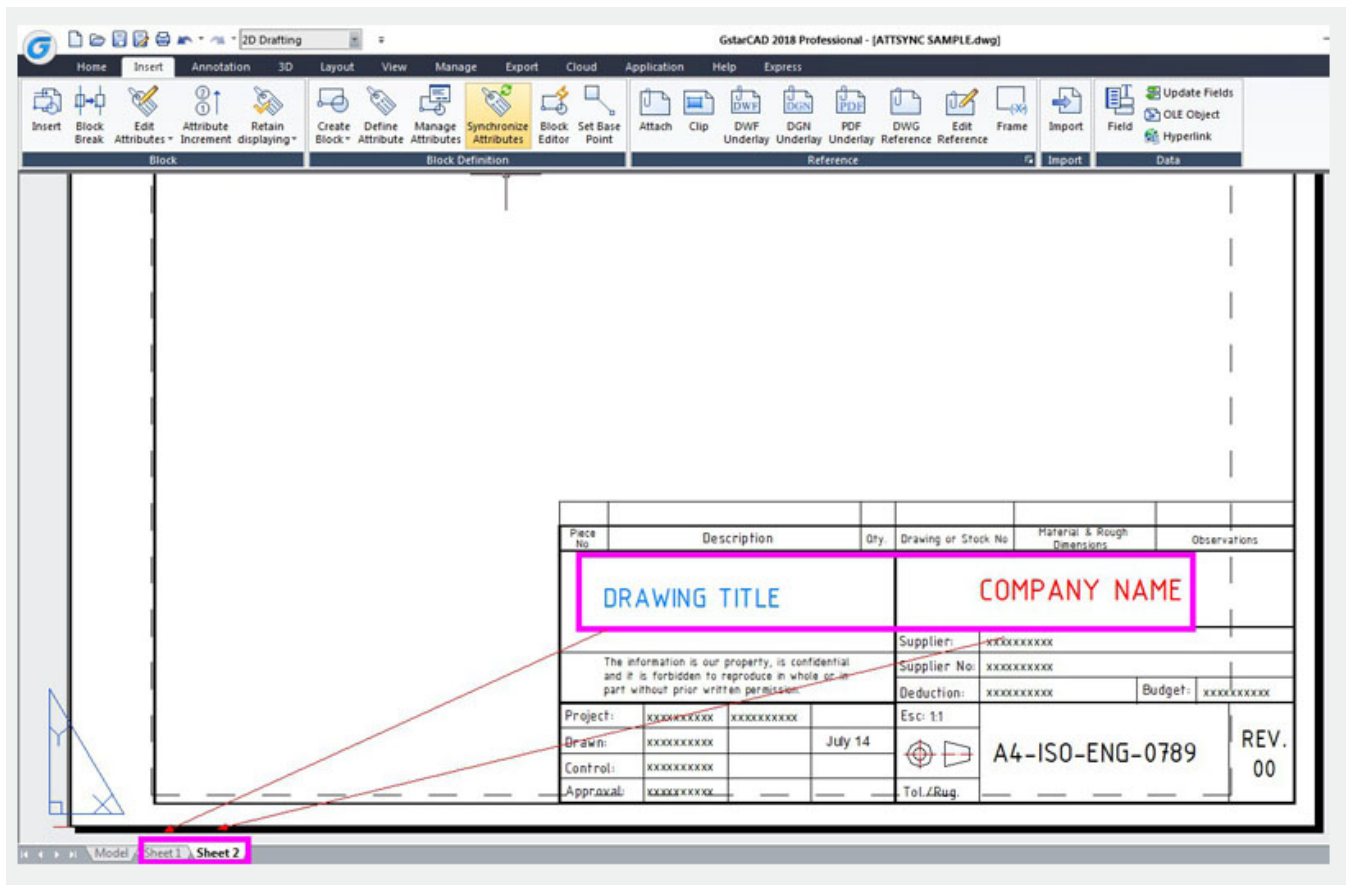
**Command Access :**

**Command Name :** ATTSYNC

**Function Description :**

You can use this command to update instances of blocks containing attributes that were redefined using the **BLOCK** or **BEDIT** commands. **ATTSYNC** does not change any values assigned to attributes in existing blocks. **ATTSYNC** removes all changes of format or features that are made by **ATTEDIT** or **EATTEDIT** commands. And it also deletes all extended data associated with blocks and might affect dynamic blocks and blocks created by third-party applications.





Online URL: <https://kb.gstarcad.com.my/article/attsync-command-1981.html>