

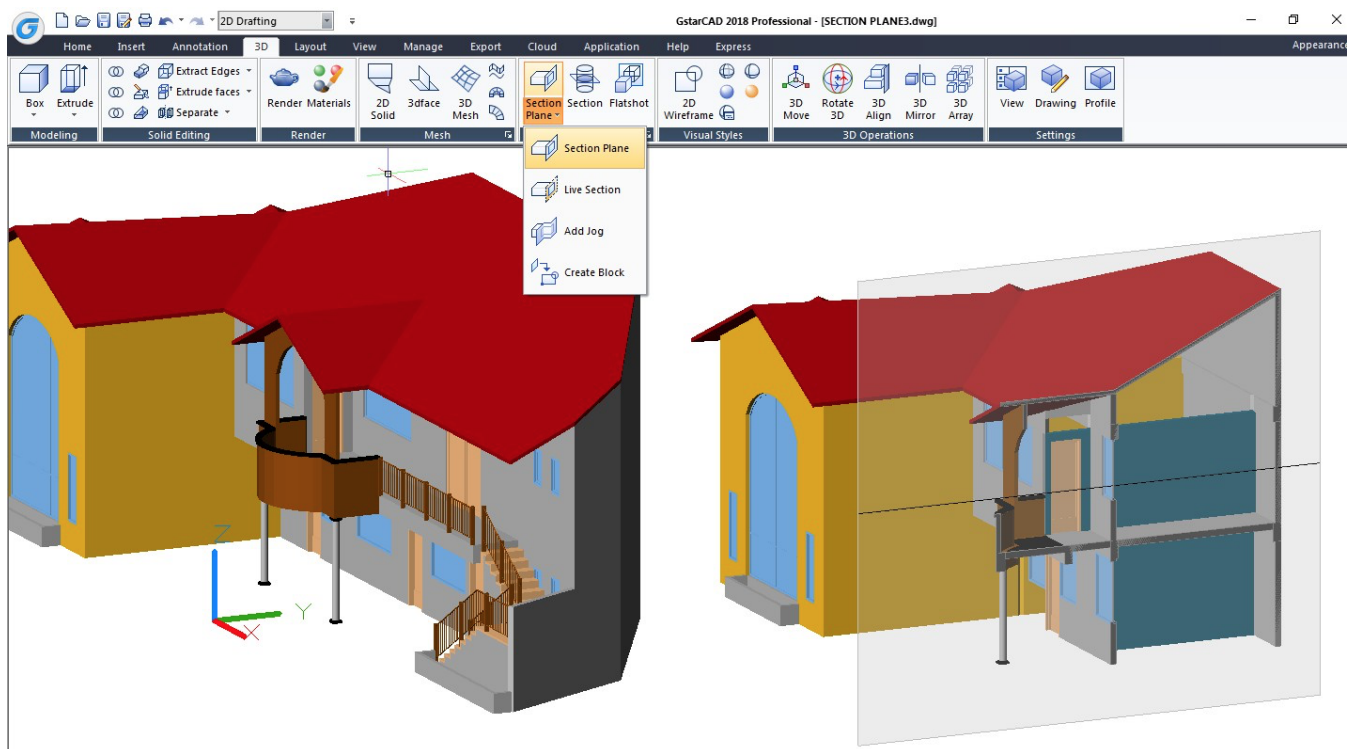
SECTIONPLANE Command

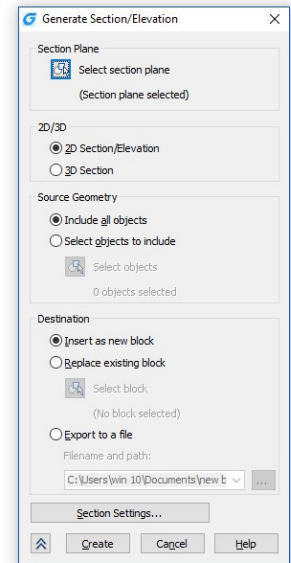
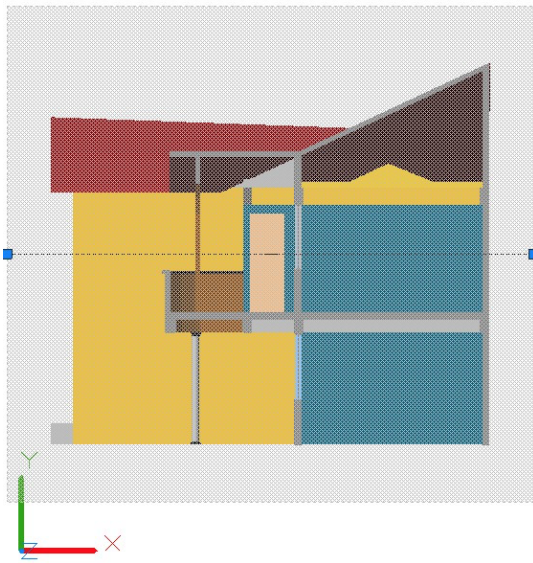
1246 GstarCAD Malaysia June 30, 2021 [3D CAD](#) 0 3668

Command name: SECTIONPLANE

With the SECTIONPLANE command, you can create a section object that acts as a cutting plane through solids, surfaces, or regions. If you turn on live sectioning, moving the section object throughout the 3D model in model space reveals inner details in real-time.

LIVESECTION, SECTIONPLANEJOG, SECTIONPLANETOBLOCK and SECTIONPLANESETTINGS commands are supported.





Online URL: <https://kb.gstarcad.com.my/article/sectionplane-command-1246.html>