

# GstarCAD server license OPT configuration file

1192 GstarCAD Malaysia November 23, 2021 [Activate / Deactivate](#) 0 7336

The options file allows the license administrator to control various operating parameters of FLEXlm. Specifically the license administrator can:

- Allow the use of features based on user, hostname, or display name.
- Deny the use of features based on user, hostname, or display name.
- Reserve licenses based on user, hostname, or display name.
- Control the amount of information logged about license usage.

Options files allow you, as the license administrator, to be as secure or open with licenses as you like.

*Lines in the options file were limited to 200 characters prior to FLEXlm v3.0. In v3.0 and later, the line length is 2048 characters. FLEXlm v4.0 allows the ` character as a continuation character in options file lines.*

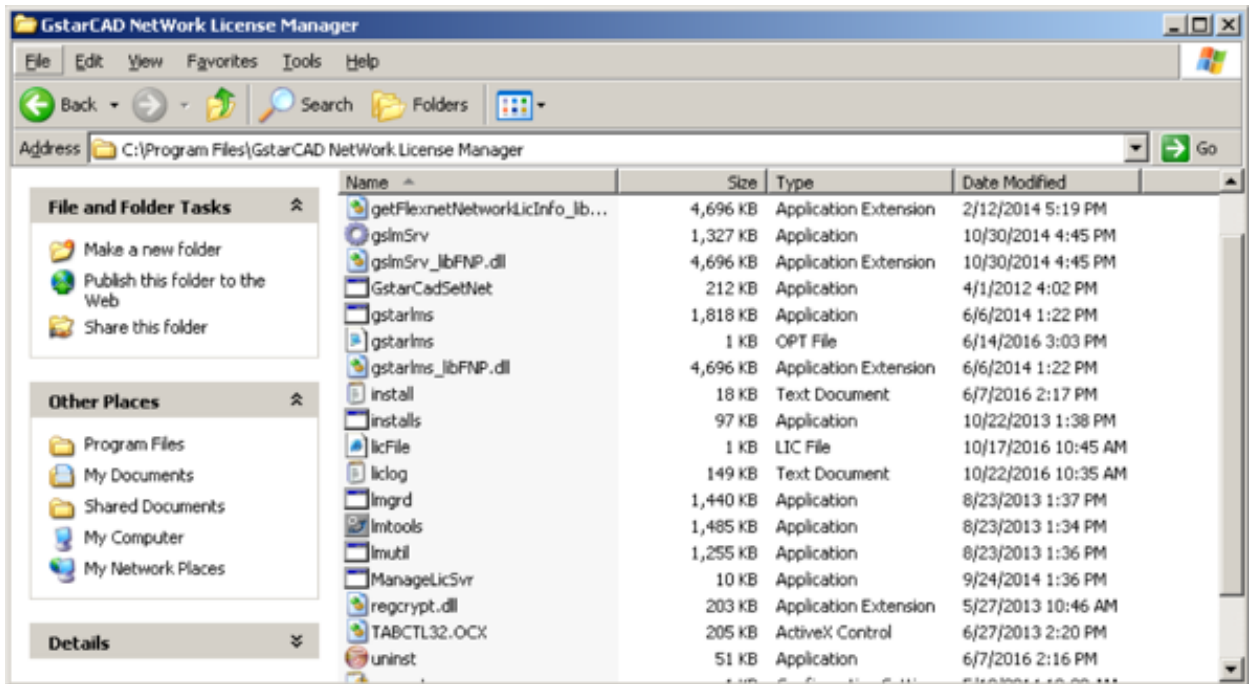
---

## To create an options file

- Use the appropriate options to create the options file using any text editor. You can put the options file anywhere; however, we recommend that the option file for vendor GstarCAD be placed in

**LMTOOLS 11.14 (2019 version or older)** C:\Program FileGstarCAD NetWork License Managergstarlms.opt

**Network License Manager (2020 version or latest)** C:\Program FilesCommon FilesGstarsoftLicense servicegstarlms.opt



2. Add the pathname to the options file in the license file. The fourth field on the DAEMON line for the application's vendor daemon.

For example,



would enable the gstarlms vendor daemon to look at the specified options file.

*Ignore if step use default license file at Network License Manager (2020 version or latest)*

## Rules of Precedence in Options Files

Before you can use options to utilize licenses effectively you must understand the options file precedence. INCLUDE and EXCLUDE statements can be combined in the same options file and control access to the same features. When doing so, keep in mind the following:

- If there is only an EXCLUDE list, everyone who is not on the list will be allowed to use the feature.
- If there is only an INCLUDE list, only those users on the list will be allowed to use the feature.
- If neither list exists, then everyone is allowed to use the feature.
- The EXCLUDE list is checked before the INCLUDE list; so someone who is on both lists will not be allowed to use the feature.

Once you create an INCLUDE or EXCLUDE list everyone else is implicitly 'outside' the group. This feature allows you, as an administrator, the ability to control licenses without having to explicitly list each user that you wish to allow or deny access to. In other words there are two approaches; you can either:

- Give most users access and list only the exceptions or
- Severely limit access and list only the those users that have access privileges.

---

### **GROUP** *groupname usernamelist*

Defines a group of users for use in INCLUDE, INCLUDEALL, EXCLUDE, EXCLUDEALL, and RESERVE option lines.

groupname - name of the group being defined

usnamelist - list of user names in that group

To define the group ENGINEERING consisting of A1, A2, A3 and A4, and the group SALES consisting of B1, B2 and B3 (*Where A<sub>n</sub> and B<sub>n</sub> is user name*)

```
GROUP ENGINEERING A1 A2 A3 A4 A5
GROUP SALES B1 B2 B3
```

In FLEXlm v3.0 multiple GROUP lines will add all the users specified into the group. Pre-v3.0 FLEXlm daemons do not allow multiple GROUP lines to concatenate. In fact, the second GROUP line would re-define the GROUP.

In FLEXlm v4.0 or later, USER\_GROUP is an alias for GROUP..

### **HOST\_GROUP** *groupname hostnamelist*

Defines a group of hosts for use in INCLUDE, INCLUDEALL, EXCLUDE, EXCLUDEALL, and

RESERVE option lines.

- groupname - name of the group being defined
- hostnamelist - list of host names in that group

To define the group TECHNICAL consisting of tech1, tech2, and tech3: (*where tech<sub>n</sub> is host or PC name*)

```
GROUP TECHNICAL tech1 tech2 tech3
```

HOST\_GROUP is available for FLEXlm v4.0 and later.

**INCLUDE** *featurename type name*

Includes a user, host, display, or group in the list of who is allowed to use the feature. Anyone not in an INCLUDE statement will not be allowed to use that feature.

- featurename - name of the feature being affected
- type - one of USER, HOST, DISPLAY, GROUP, or HOST\_GROUP
- name - name of the user or group to include

To include user 'A1' in the list of users able to use feature GSCAD2\_2011, where GSCAD2\_2011 is GstarCAD Standard and GSCAD1\_2011 is GstarCAD Professional:

```
INCLUDE GSCAD2_2011 USER A1
```

```
INCLUDE GSCAD2_2011 HOST tech1
```

```
INCLUDE GSCAD2_2011 GROUP SALES
```

```
INCLUDE GSCAD2_2011 HOST_GROUP TECHNICAL
```

where:

- GSCAD2\_2011 is the GstarCAD Professional
- GSCAD1\_2011 is the GstarCAD Standard
- GSCAD5\_2011 is the GstarCAD LT
- GSCAD10\_2011 is the GstarCAD Education

and \_2011 are all available released, **NOT** definite as GstarCAD2011

---

Simple Options File Example

### Limiting Access for Multiple Users by Group

---

GROUP ENGINEERING A1 A2 A3 A4 A5  
GROUP SALES B1 B2 B3

INCLUDE GSCAD1\_2011 GROUP ENGINEERING  
INCLUDE GSCAD1\_2011\_ENG GROUP ENGINEERING

INCLUDE GSCAD2\_2011 GROUP SALES  
INCLUDE GSCAD2\_2011\_ENG GROUP SALES

---

### Limiting Access for Multiple Users by ip address

---

INCLUDE GSCAD1\_2011 INTERNET 192.168.0.98  
INCLUDE GSCAD1\_2011\_ENG INTERNET 192.168.0.98

INCLUDE GSCAD2\_2011 INTERNET 192.168.0.92  
INCLUDE GSCAD2\_2011\_ENG INTERNET 192.168.0.92

---

**Prevents any user logged into a host with an IP address in the range  
192.168.11.0 through 192.168.11.255 from using the feature  
“GSCAD1\_2011.”**

---

EXCLUDE GSCAD1\_2011 INTERNET 192.168.11.\*

```
EXCLUDE GSCAD1_2011_ENG INTERNET 192.168.11.*
```

### **Limiting Access for Multiple Users by IP address with version control**

**192.168.0.98 allow to use GstarCAD 2015 PRO and blocked to use 2016 version**

```
EXCLUDE GSCAD1_2011:VERSION=2016 INTERNET 192.168.0.98
EXCLUDE GSCAD1_2011_ENG:VERSION=2016 INTERNET 192.168.0.98

INCLUDE GSCAD1_2011:VERSION=2015 INTERNET 192.168.0.98
INCLUDE GSCAD1_2011_ENG:VERSION=2015 INTERNET 192.168.0.98

EXCLUDE GSCAD1_2011:VERSION=2015 INTERNET 192.168.0.92
EXCLUDE GSCAD1_2011_ENG:VERSION=2015 INTERNET 192.168.0.92

INCLUDE GSCAD1_2011:VERSION=2016 INTERNET 192.168.0.92
INCLUDE GSCAD1_2011_ENG:VERSION=2016 INTERNET 192.168.0.92
```

*where VERSION=2016 is GstarCAD 2016*

Online URL: <https://kb.gstarcad.com.my/article/gstarcad-server-license-opt-configuration-file-1192.html>